

ACCOUNTABILITY INFORMATION REQUIRED BY THE FEDERAL NO CHILD LEFT BEHIND ACT

The information below is used to determine the Adequate Yearly Progress designation for your school. A school is designated as *Not Meeting AYP* if any indicator is determined to be *Not Met*. The Student Achievement and Student Participation ratings are based on 2004-2005 and 2005-2006 Oregon Statewide Assessments for the students in your school identified as enrolled for a full academic year. The statewide goal for the minimum percentage of students expected to meet or exceed standards is 50% in English/Language Arts and 49% in Mathematics. Student Participation is expected to be 95% or greater. The statewide goal for the minimum graduation rate is 68.1%. The statewide goal for the minimum attendance rate is 92.0%. For more information, please view documents at www.ode.state.or.us/data/reportcard/reports.aspx

STUDENT GROUP	STUDENT ACHIEVEMENT		STUDENT PARTICIPATION		GRADUATION
	ENGLISH/LANGUAGE ARTS	MATHEMATICS	ENGLISH/LANGUAGE ARTS	MATHEMATICS	
Race/Ethnicity					
White	MET	MET	MET	MET	MET
African American/Black	NA	NA	NA	NA	NA
Hispanic	MET	NA	MET	NA	MET
Asian/Pacific Islander	NA	NA	NA	NA	NA
Am. Indian/Alaskan Native	NA	NA	NA	NA	NA
Multi-Racial/Multi-Ethnic	NA	NA	NA	NA	---
Special Education	MET	MET	MET	MET	MET
Limited English Proficient	NA	NA	NA	NA	NA
Economically Disadvantaged	MET	MET	MET	MET	MET
All Students	MET	MET	MET	MET	MET

NA Too few test scores or students to determine a rating.

--- No data available

Department of Education Notes

LOCAL INFORMATION PROVIDED BY YOUR SCHOOL OR DISTRICT

2005-2006 School Report Card

ASHLAND
HIGH SCHOOL



Dear Parents and Community Members,

October 13, 2006

The Oregon Department of Education is proud to issue the eighth annual school report card. As Oregon schools and districts continue to face many challenges, educators remain committed to providing the highest quality education for Oregon students. This year you will find two ratings displayed on this report card: an Oregon rating and a federal rating required by the No Child Left Behind Act. The report card is not meant to tell you everything about your school, but it offers a starting point for discussions about where improvement might be needed and for celebrating successes in education for Oregon's children.

Susan Castillo, State Superintendent of Public Instruction

Federal Adequate Yearly Progress Rating: MET

DID NOT MEET MET
See rating details on back page

Oregon Report Card Overall Rating: SATISFACTORY



SCHOOL AT A GLANCE

Testing Participation

School Characteristics Rating: **EXCEPTIONAL**

	School	State
Participation in 2005-2006 Statewide Assessment	99.9%	98.4%

School Size

	School
Number of Students	1,088

English Language Learners

	School
Percentage of Students in ESL Programs	2.3%

Students Graduating 2004-2005

	School	State
With a Diploma	269	32,588
With a Diploma and a CIM	126	12,036

SAT Scores

	School	State	Nation
Critical Reading	576	523	503
Math	567	529	518
Writing	546	503	497
Percentage Tested	57%	55%	---
Number Tested	162	18,357	---

Expulsions

	School	State
Number of Expulsions Due to Weapons	2	430

Staffing

	School
Administrators (FTE)	3.0
Teachers (FTE)	59.8
• Average Years of Experience	14.4
• With a Master's Degree or Higher	54.2%
• With Emergency or Provisional Credential as of September 1, 2006	5.4%
• Classes Taught by Teachers Who Meet Federal Definition of Highly Qualified Teacher	84.6%
Educational Assistants (FTE)	5.3
Other Staff (FTE)	24.1

Department of Education Notes

SCHOOL RATINGS AND SUPPORTING DATA

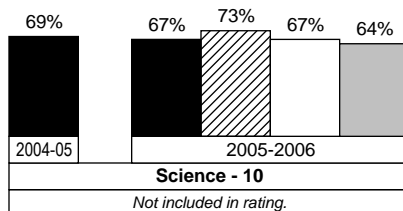
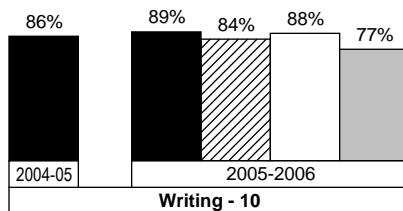
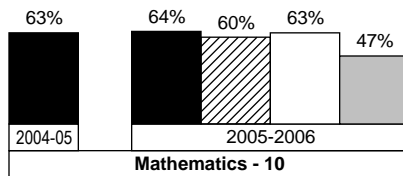
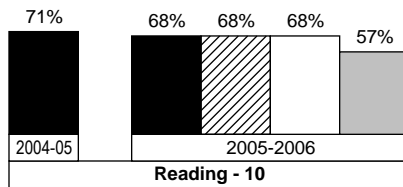
Academic Achievement

Student Performance Rating: **STRONG**

Percentage of Students Meeting Standards

The graphs below show the percentage of students in your school at the indicated grades that met or exceeded the state standards on Oregon Statewide Assessments during the last two school years. District, state, and comparison school averages are displayed. Writing results include students that conditionally met the standard. Comparison schools are Oregon schools with similar demographics.

School
 Comparison Schools
 District
 State



Improvement

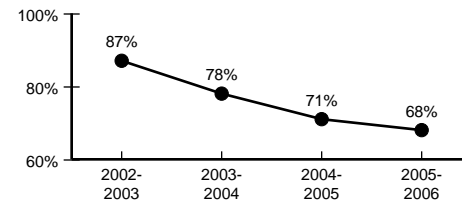
Assessments, Attendance, Dropout

Improvement Rating: **DECLINED**

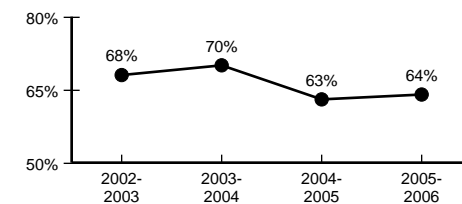
Four-Year Improvement

The graphs below show change during the past four years in the percentage of students meeting standards on Reading and Math Knowledge and Skills Statewide Assessments and in attendance and dropout rates. Improvement ratings are described by one of the following: Improved, Stayed About the Same, or Declined.

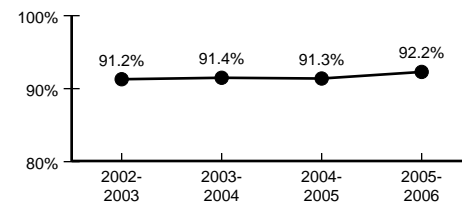
Reading



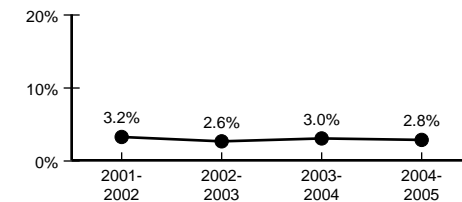
Mathematics



Attendance



Dropout Rate



SCHOOL RATINGS AND SUPPORTING DATA

Attendance/Dropout Rates

Student Behavior Rating: **STRONG**

Attendance	School	District	State	Dropout	Number in School	School	District	State
2004-2005	91.3%	92.9%	91.6%	2003-2004	36	3.0%	3.0%	4.6%
2005-2006	92.2%	93.6%	91.2%	2004-2005	33	2.8%	2.8%	4.2%

STATEWIDE ASSESSMENT RESULTS

The table below shows the percentage of students in your school in grades 3-8 and 10 that exceeded, met, or did not meet state standards and participated in 2005-2006 Oregon Statewide Assessments. English/Language Arts includes Reading and Writing tests. For more information, see www.ode.state.or.us/search/results/?id=233

STUDENT GROUP	STUDENT ACHIEVEMENT						STUDENT PARTICIPATION	
	ENGLISH/ LANGUAGE ARTS			MATHEMATICS			ENGLISH/ LANGUAGE ARTS	MATHEMATICS
	EXCEEDED %	MET %	NOT MET %	EXCEEDED %	MET %	NOT MET %	%	%
White	23.2	50.4	26.3	29.8	36.9	33.3	99.8	100.0
African American/Black	16.7	16.7	66.7	*	*	*	100.0	100.0
Hispanic	18.8	28.1	53.1	25.0	18.8	56.3	100.0	100.0
Asian/Pacific Islander	20.0	50.0	30.0	*	*	*	100.0	100.0
American Indian/Alaskan Native	11.1	55.6	33.3	*	*	*	100.0	100.0
Multi-Racial/Multi-Ethnic	---	---	---	---	---	---	---	---
Male	18.6	46.7	34.7	29.3	31.7	39.0	99.6	100.0
Female	26.4	49.8	23.8	28.5	38.0	33.6	100.0	100.0
Talented and Gifted	---	---	---	---	---	---	---	---
Students with Disabilities	10.4	25.0	64.6	12.5	20.8	66.7	100.0	100.0
Migrant	*	*	*	*	*	*	100.0	100.0
Limited English Proficient	0.0	30.0	70.0	*	*	*	100.0	100.0
Economically Disadvantaged	9.3	43.3	47.4	8.2	32.7	59.2	99.0	100.0
All Students	22.7	48.3	28.9	28.8	35.0	36.2	99.8	100.0

* Not displayed to protect student confidentiality.

--- No data available

Department of Education Notes

For more information, contact the Oregon Department of Education at report.card@state.or.us or 503-947-5828.

For more information, please view documents at www.ode.state.or.us/data/reports/toc.aspx