

STUDENT PERFORMANCE DATA

Math Knowledge and Skills Grade 10		Weight	2002-2003		2003-2004		2004-2005		2005-2006	
			Students	Weighted	Students	Weighted	Students	Weighted	Students	Weighted
Exceeds	133	121	16,093	101	13,433	92	12,236	73	9,709	
Meets	100	66	6,600	81	8,100	73	7,300	89	8,900	
Nearly Meets	67	64	4,288	53	3,551	53	3,551	57	3,819	
Low	33	17	561	20	660	34	1,122	29	957	
Very Low	0	6	0	7	0	9	0	6	0	
Totals		274	27,542	262	25,744	261	24,209	254	23,385	
Index**		100.5		98.3		92.8		92.1		

Reading Knowledge and Skills Grade 10		Weight	2002-2003		2003-2004		2004-2005		2005-2006	
			Students	Weighted	Students	Weighted	Students	Weighted	Students	Weighted
Exceeds	133	120	15,960	92	12,236	68	9,044	92	12,236	
Meets	100	114	11,400	115	11,500	116	11,600	81	8,100	
Nearly Meets	67	25	1,675	37	2,479	41	2,747	33	2,211	
Low	33	11	363	20	660	35	1,155	45	1,485	
Very Low	0	0	0	2	0	1	0	2	0	
Totals		270	29,398	266	26,875	261	24,546	253	24,032	
Index**		108.9		101.0		94.0		95.0		

Writing Grade 10		Weight	2002-2003		2003-2004		2004-2005		2005-2006	
			Students	Weighted	Students	Weighted	Students	Weighted	Students	Weighted
Exceeds	133	27	3,591	33	4,389	34	4,522	23	3,059	
Meets	100	168	16,800	154	15,400	157	15,700	165	16,500	
Nearly Meets	67	51	3,417	43	2,881	31	2,077	38	2,546	
Low	33	17	561	40	1,320	34	1,122	27	891	
Very Low	0	0	0	1	0	2	0	1	0	
Totals		263	24,369	271	23,990	258	23,421	254	22,996	
Index**		92.7		88.5		90.8		90.5		

For schools with grade 10, 2004-05 and 2005-06 Writing results are included in the calculation of the student performance rating but are not included in the Improvement rating. Statewide Writing assessments were first offered in grades 4 and 7 in 2004-05.

Science Grade 10		Weight	2002-2003		2003-2004		2004-2005		2005-2006	
			Students	Weighted	Students	Weighted	Students	Weighted	Students	Weighted
Exceeds	133			59	7,847	58	7,714	57	7,581	
Meets	100			146	14,600	120	12,000	114	11,400	
Nearly Meets	67			27	1,809	34	2,278	28	1,876	
Low	33			18	594	33	1,089	48	1,584	
Very Low	0			11	0	12	0	7	0	
Totals				261	24,850	257	23,081	254	22,441	
Index**				95.2		89.8		88.4		

Data are not included in the ratings and are displayed for information only.

** Index = Total Weighted / Total Students

STUDENT PERFORMANCE FORMULAE

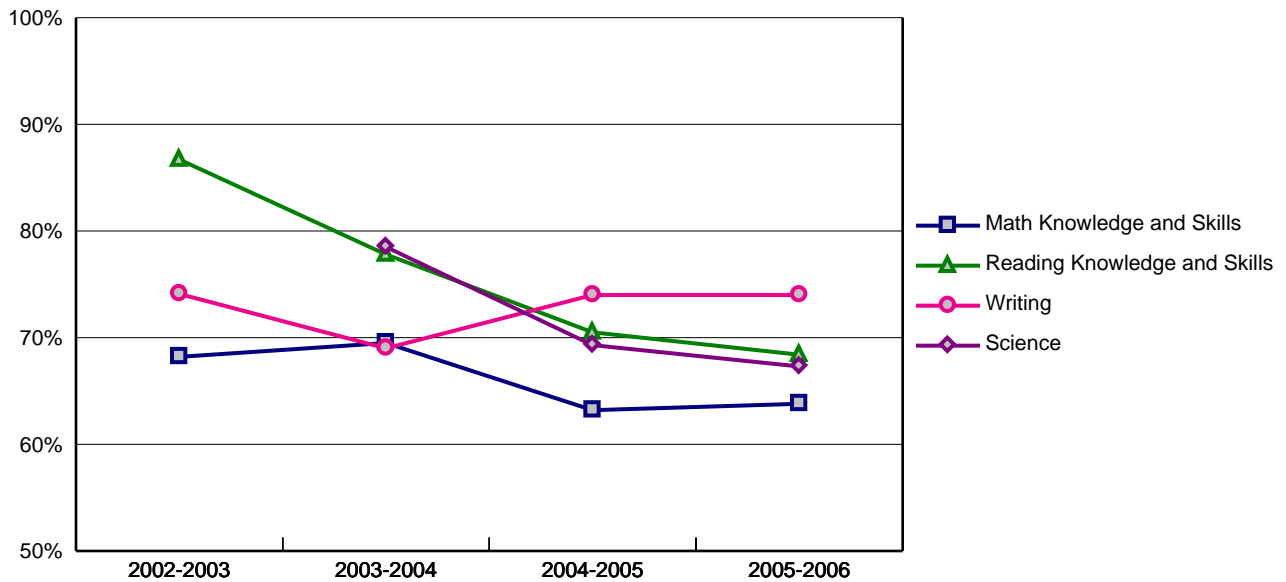
Student Performance = $[(.39 * \text{Math Index}) + (.39 * \text{Read Index}) + (.22 * \text{Write Index})]$

Student Performance 2004-2005 = $[(.39 * 92.8) + (.39 * 94.0) + (.22 * 90.8)] = 92.9$

Student Performance 2005-2006 = $[(.39 * 92.1) + (.39 * 95.0) + (.22 * 90.5)] = 92.9$

Student Performance Rating: Strong					
Student Performance = (Student Performance 04-05 + Student Performance 05-06) / 2					
(92.9 + 92.9) / 2 = 92.9					
Rating Score = 3					
Rating Score	0	1	2	3	4
Rating	Unacceptable	Low	Satisfactory	Strong	Exceptional
Index Score	Less Than 60.0	60.0 - 69.9	70.0 - 89.9	90.0 - 99.9	100.0 or Higher

Student Performance Trends



Note: In this graph, "Conditionally Met" for Writing is NOT included in %Meets/Exceeds.

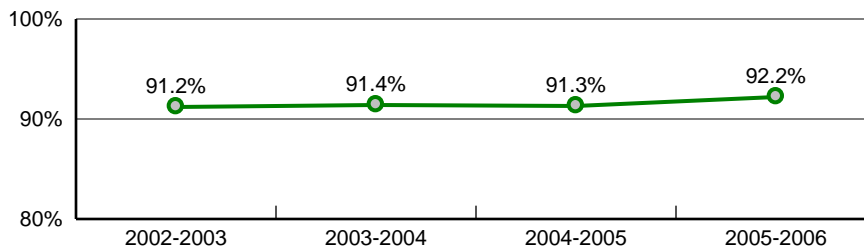
STUDENT BEHAVIOR FORMULAE

Two-Year Average Attendance Index 2004-05, 2005-06 = $[(\text{Attendance Rate 2005} + \text{Attendance Rate 2006}) / 2]$
 = $[(91.3 + 92.2) / 2] = 91.8$

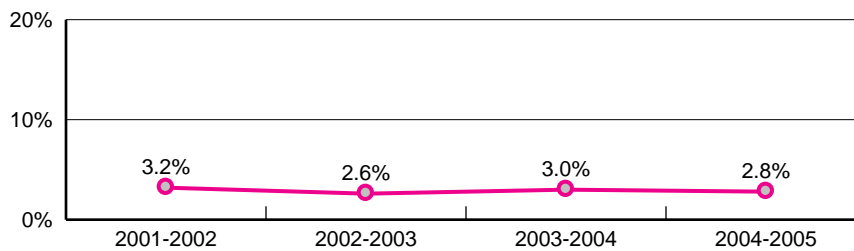
Two-Year Average Dropout Index 2003-04, 2004-05 = $[(100 - \text{Dropout Rate 2004}) + (100 - \text{Dropout Rate 2005})] / 2]$
 = $[(97.0 + 97.2) / 2] = 97.1$

Student Behavior Rating: Strong					
Student Behavior = $[(\text{Two-Year Average Attendance Index} + \text{Two-Year Average Dropout Index}) / 2]$ $[(91.8 + 97.1) / 2] = 94.5$					
Rating Score = 3					
Rating Score	0	1	2	3	4
Rating	Unacceptable	Low	Satisfactory	Strong	Exceptional
Index Score	Less than 89.0	89.0 - 91.9	92.0 - 93.9	94.0 - 95.9	96.0 or Higher

Attendance Trends



Dropout Trends



* Please note that all numbers are rounded to the nearest tenth after every multiplication or division.

IMPROVEMENT FORMULAE

Math Improvement = $[(\text{Math } 2006 + \text{Math } 2005) / 2] - [(\text{Math } 2004 + \text{Math } 2003) / 2]$
 = $[(92.1 + 92.8) / 2] - [(98.3 + 100.5) / 2] = -6.9$

Reading Improvement = $[(\text{Read } 2006 + \text{Read } 2005) / 2] - [(\text{Read } 2004 + \text{Read } 2003) / 2]$
 = $[(95.0 + 94.0) / 2] - [(101.0 + 108.9) / 2] = -10.5$

Test Improvement = $[(\text{Math Improvement (2003-2006)} + \text{Reading Improvement (2003-2006)}) / 2]$
 = $[(-6.9 + -10.5) / 2] = -8.7$

Attendance Improvement = $[(\text{Attend. Rate } 2006 + \text{Attend. Rate } 2005) / 2] - [(\text{Attend. Rate } 2004 + \text{Attend. Rate } 2003) / 2]$
 = $[(92.2 + 91.3) / 2] - [(91.4 + 91.2) / 2] = 0.5$

Dropout Improvement = $[(\text{Dropout Index } 2005 + \text{Dropout Index } 2004) / 2] - [(\text{Dropout Index } 2003 + \text{Dropout Index } 2002) / 2]$
 = $[(97.2 + 97.0) / 2] - [(97.4 + 96.8) / 2] = 0.0$

Attendance/Dropout Improvement = $[(\text{Attendance Improvement} + \text{Dropout Improvement}) / 2]$
 = $[(0.5 + 0.0) / 2] = 0.3$

Improvement Rating: Declined			
Improvement = $[(\text{Test Improvement} * .8) + (\text{Attendance/Dropout Improvement} * .2)]$			
$[(-8.7 * .8) + (0.3 * .2)] = -6.9$			
Rating Score = -0.25			
Rating Score	-0.25	0	1
Rating	Declined	Stayed About The Same	Improved
Index Score	Less than -4.9	-4.9 - 4.9	5.0 or Higher

* Please note that all numbers are rounded to the nearest tenth after every multiplication or division.

SCHOOL CHARACTERISTICS FORMULAE

Participation in Statewide Assessments = Number of Participants + Number of Non-Participants
 = 784 + 1 = 785

School Characteristics Rating: Exceptional		
School Characteristics = Participants / (Participants + Non-Participants) 784 / 785 = 99.9		
Unacceptable	Low	Exceptional
Less than 89.5	89.5 - 94.4	94.5 or Higher

Participation Detail

Grade	RL		MA		WR		SC	
	Partic	Non-Partic	Partic	Non-Partic	Partic	Non-Partic	Partic	Non-Partic
3	0	0	0	0				
4	0	0	0	0	0	0		
5	0	0	0	0			0	0
6	0	0	0	0				
7	0	0	0	0	0	0		
8	0	0	0	0			0	0
10	262	1	263	0	259	0	263	0

Science participation is for display only and is not included in the School Characteristics rating.

* Please note that all numbers are rounded to the nearest tenth after every multiplication or division.

OVERALL PERFORMANCE

Overall Performance Rating: Satisfactory				
Overall Performance = (Student Performance * .8) + (Student Behavior * .2) + Improvement (3 * .8) + (3 * .2) + -0.25 = 2.8				
Unacceptable	Low	Satisfactory	Strong	Exceptional
Less Than 1.0	1.0 - 1.4	1.5 - 2.9	3.0 - 3.9	4.0 or Higher

NOTES

Student Performance

There are no notes.

Student Behavior

There are no notes.

Improvement

There are no notes.

School Characteristics

There are no notes.

Overall Performance

There are no notes.

* Please note that all numbers are rounded to the nearest tenth after every multiplication or division.