

STUDENT PERFORMANCE DATA

Math Knowledge and Skills Grade 08		Weight	2002-2003		2003-2004		2004-2005		2005-2006	
			Students	Weighted	Students	Weighted	Students	Weighted	Students	Weighted
Exceeds	133	136	18,088	131	17,423	129	17,157	166	22,078	
Meets	100	76	7,600	49	4,900	43	4,300	68	6,800	
Nearly Meets	67	28	1,876	23	1,541	19	1,273	16	1,072	
Low	33	22	726	19	627	15	495	7	231	
Very Low	0	2	0	1	0	4	0	0	0	
Totals		264	28,290	223	24,491	210	23,225	257	30,181	
Index**		107.2		109.8		110.6		117.4		

Reading Knowledge and Skills Grade 08		Weight	2002-2003		2003-2004		2004-2005		2005-2006	
			Students	Weighted	Students	Weighted	Students	Weighted	Students	Weighted
Exceeds	133	123	16,359	125	16,625	97	12,901	142	18,886	
Meets	100	97	9,700	65	6,500	72	7,200	88	8,800	
Nearly Meets	67	27	1,809	28	1,876	27	1,809	20	1,340	
Low	33	10	330	5	165	9	297	5	165	
Very Low	0	0	0	1	0	2	0	0	0	
Totals		257	28,198	224	25,166	207	22,207	255	29,191	
Index**		109.7		112.3		107.3		114.5		

Writing Grade 07		Weight	2002-2003		2003-2004		2004-2005		2005-2006	
			Students	Weighted	Students	Weighted	Students	Weighted	Students	Weighted
Exceeds	133	0	0	13	1,729	10	1,330	9	1,197	
Meets	100	0	0	103	10,300	110	11,000	100	10,000	
Nearly Meets	67	0	0	75	5,025	64	4,288	43	2,881	
Low	33	0	0	33	1,089	31	1,023	58	1,914	
Very Low	0	0	0	0	0	0	0	0	0	
Totals				224	18,143	215	17,641	210	15,992	
Index**				81.0		82.1		76.2		

Only grade 10 results for 2004-05 and 2005-06 are included in the rating formula. Statewide Writing assessments were first offered in grades 4 and 7 in 2004-05.

Science Grade 08		Weight	2002-2003		2003-2004		2004-2005		2005-2006	
			Students	Weighted	Students	Weighted	Students	Weighted	Students	Weighted
Exceeds	133			27	3,591	37	4,921	78	10,374	
Meets	100			147	14,700	136	13,600	161	16,100	
Nearly Meets	67			41	2,747	30	2,010	11	737	
Low	33			17	561	4	132	7	231	
Very Low	0			0	0	0	0	1	0	
Totals				232	21,599	207	20,663	258	27,442	
Index**				93.1		99.8		106.4		

Data are not included in the ratings and are displayed for information only.

** Index = Total Weighted / Total Students

STUDENT PERFORMANCE FORMULAE

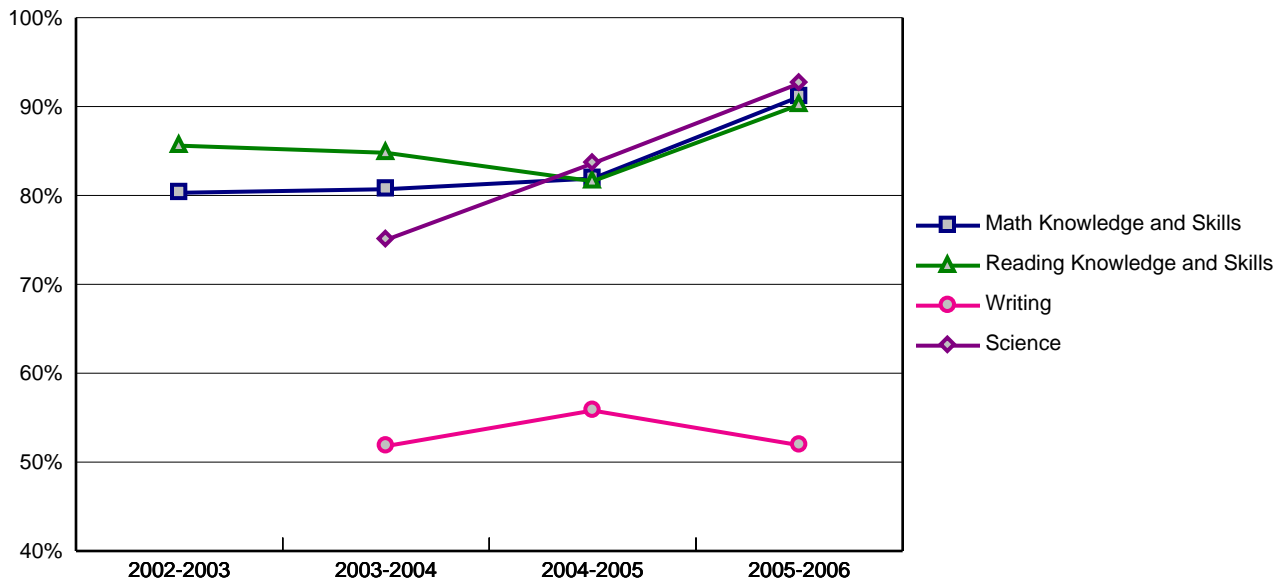
Student Performance = $[(.50 * \text{Math Index}) + (.50 * \text{Read Index})]$

Student Performance 2004-2005 = $[(.50 * 110.6) + (.50 * 107.3)] = 109.0$

Student Performance 2005-2006 = $[(.50 * 117.4) + (.50 * 114.5)] = 116.0$

Student Performance Rating: Strong					
Student Performance = (Student Performance 04-05 + Student Performance 05-06) / 2					
(109.0 + 116.0) / 2 = 112.5					
Rating Score = 3					
Rating Score	0	1	2	3	4
Rating	Unacceptable	Low	Satisfactory	Strong	Exceptional
Index Score	Less than 60.0	60.0 - 69.9	70.0 - 99.9	100.0 - 114.9	115.0 or Higher

Student Performance Trends



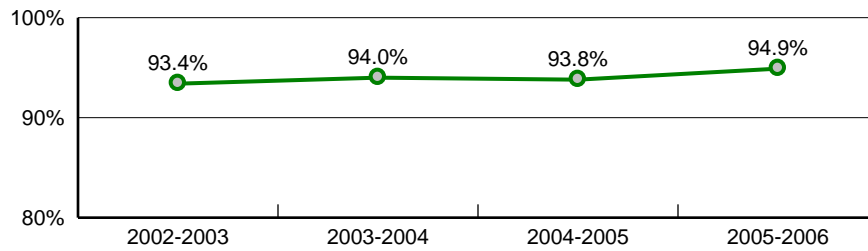
Note: In this graph, "Conditionally Met" for Writing is NOT included in %Meets/Exceeds.

STUDENT BEHAVIOR FORMULAE

Two-Year Average Attendance Index 2004-05, 2005-06 = [(Attendance Rate 2005 + Attendance Rate 2006) / 2]
 = [(93.8 + 94.9) / 2] = 94.4

Student Behavior Rating: Strong					
Student Behavior = Two-Year Avg. Attendance Index					
94.4					
Rating Score = 3					
Rating Score	0	1	2	3	4
Rating	Unacceptable	Low	Satisfactory	Strong	Exceptional
Index Score	Less than 89.0	89.0 - 91.9	92.0 - 93.9	94.0 - 95.9	96.0 or Higher

Attendance Trends



* Please note that all numbers are rounded to the nearest tenth after every multiplication or division.

IMPROVEMENT FORMULAE

Math Improvement = $[(\text{Math } 2006 + \text{Math } 2005) / 2] - [(\text{Math } 2004 + \text{Math } 2003) / 2]$
 = $[(117.4 + 110.6) / 2] - [(109.8 + 107.2) / 2] = 5.5$

Reading Improvement = $[(\text{Read } 2006 + \text{Read } 2005) / 2] - [(\text{Read } 2004 + \text{Read } 2003) / 2]$
 = $[(114.5 + 107.3) / 2] - [(112.3 + 109.7) / 2] = -0.1$

Test Improvement = $[(\text{Math Improvement (2003-2006)} + \text{Reading Improvement (2003-2006)}) / 2]$
 = $[(5.5 + -0.1) / 2] = 2.7$

Attendance Improvement = $[(\text{Attend. Rate } 2006 + \text{Attend. Rate } 2005) / 2] - [(\text{Attend. Rate } 2004 + \text{Attend. Rate } 2003) / 2]$
 = $[(94.9 + 93.8) / 2] - [(94.0 + 93.4) / 2] = 0.7$

Improvement Rating: Stayed About The Same

Improvement = $[(\text{Test Improvement} * .8) + (\text{Attendance Improvement} * .2)]$
 $[(2.7 * .8) + (0.7 * .2)] = 2.3$

Rating Score = 0

Rating Score	-0.25	0	1
Rating	Declined	Stayed About The Same	Improved
Index Score	Less than -4.9	-4.9 - 4.9	5.0 or Higher

* Please note that all numbers are rounded to the nearest tenth after every multiplication or division.

SCHOOL CHARACTERISTICS FORMULAE

Participation in Statewide Assessments = Number of Participants + Number of Non-Participants
 = 1588 + 5 = 1593

School Characteristics Rating: Exceptional		
School Characteristics = Participants / (Participants + Non-Participants) 1588 / 1593 = 99.7		
Unacceptable	Low	Exceptional
Less than 89.5	89.5 - 94.4	94.5 or Higher

Participation Detail

Grade	RL		MA		WR		SC	
	Partic	Non-Partic	Partic	Non-Partic	Partic	Non-Partic	Partic	Non-Partic
3	0	0	0	0				
4	0	0	0	0	0	0		
5	25	0	25	0			25	0
6	208	0	208	0				
7	218	0	216	1	214	3		
8	237	1	237	0			236	1
10	0	0	0	0	0	0	0	0

Science participation is for display only and is not included in the School Characteristics rating.

* Please note that all numbers are rounded to the nearest tenth after every multiplication or division.

OVERALL PERFORMANCE

Overall Performance Rating: **Strong**

$$\text{Overall Performance} = (\text{Student Performance} * .8) + (\text{Student Behavior} * .2) + \text{Improvement}$$
$$(3 * .8) + (3 * .2) + 0 = 3.0$$

Unacceptable	Low	Satisfactory	Strong	Exceptional
Less Than 1.0	1.0 - 1.4	1.5 - 2.9	3.0 - 3.9	4.0 or Higher

NOTES

Student Performance

There are no notes.

Student Behavior

There are no notes.

Improvement

There are no notes.

School Characteristics

There are no notes.

Overall Performance

There are no notes.

* Please note that all numbers are rounded to the nearest tenth after every multiplication or division.