

ACCOUNTABILITY INFORMATION REQUIRED BY THE FEDERAL NO CHILD LEFT BEHIND ACT

The information below is used to determine the Adequate Yearly Progress designation for your school. A school is designated as *Not Meeting AYP* if any indicator is determined to be *Not Met*. The Student Achievement and Student Participation ratings are based on 2001-2002 and 2002-2003 Oregon Statewide Assessments for the students in your school identified as enrolled for a full academic year. The statewide goal for the minimum percentage of students expected to meet or exceed standards is 40.0% in English/Language Arts and 39.0% in Mathematics. Student Participation is expected to be 95.0% or greater. The statewide goal for the minimum graduation rate is 68.1%. The statewide goal for the minimum attendance rate is 92.0%. For more information, please view documents at www.ode.state.or.us/nclb/ayp/index.asp

STUDENT GROUP	STUDENT ACHIEVEMENT		STUDENT PARTICIPATION		GRADUATION
	ENGLISH/LANGUAGE ARTS	MATHEMATICS	ENGLISH/LANGUAGE ARTS	MATHEMATICS	
Race/Ethnicity					
White	MET	MET	MET	MET	MET
African American/Black	NA	NA	NA	NA	NA
Hispanic	NA	NA	NA	NA	NA
Asian/Pacific Islander	NA	NA	NA	NA	NA
Am. Indian/Alaskan Native	NA	NA	NA	NA	NA
Multi-Racial/Multi-Ethnic	NA	NA	NA	NA	---
Special Education	MET	MET	MET	MET	MET
Limited English Proficient	NA	NA	NA	NA	---
Economically Disadvantaged	MET	MET	MET	MET	---
All Students	MET	MET	MET	MET	MET

NA Too few test scores or students to determine a rating.

--- No data available

Department of Education Notes

LOCAL INFORMATION PROVIDED BY YOUR SCHOOL OR DISTRICT

2002-2003 School Report Card

ASHLAND
HIGH SCHOOL



Dear Parents and Community Members,

January 29, 2004

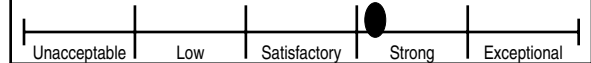
The Oregon Department of Education is proud to issue the fifth annual school report card. As Oregon schools and districts continue to face many challenges, educators remain committed to providing the highest quality education for Oregon students. This year you will find two ratings displayed on this report card: an Oregon rating and a federal rating required by the No Child Left Behind Act. The report card is not meant to tell you everything about your school, but it offers a starting point for discussions about where improvement might be needed and for celebrating successes in education for Oregon's children.

Susan Castillo
Susan Castillo, State Superintendent of Public Instruction

Federal Adequate Yearly Progress Rating: MET

DID NOT MEET MET
See rating details on back page

Oregon Report Card Overall Rating: STRONG



SCHOOL AT A GLANCE



Testing Participation

School Characteristics Rating: **EXCEPTIONAL**

Grade 10	School	State
Participation in 2002-2003 Statewide Assessment	95.0%	97.9%

School Size	School
Number of Students	1,148

English Language Learners	School
Percentage of Students in ESL Programs	1.6%

Students Graduating	School	State
With a Diploma	275	32,466
With a Diploma and a CIM	138	10,494

SAT Scores	School	State	Nation
Verbal	560	526	507
Math	555	527	519
Percentage Tested	59%	57%	---
Number Tested	175	19,241	---

Expulsions	School	State
Number of Expulsions Due to Weapons	0	380

Staffing	School
Administrators (FTE)	5.0
Teachers (FTE)	60.9
• Average Years of Experience	14.0
• With a Master's Degree or Higher	53.0%
• With Emergency or Provisional Credential as of November 25, 2003	1.6%
• Classes Taught by Teachers Who Meet Federal Definition of Highly Qualified Teacher	89.0%
Instructional Assistants (FTE)	4.9
Other Staff (FTE)	22.5

Department of Education Notes

SCHOOL RATINGS AND SUPPORTING DATA



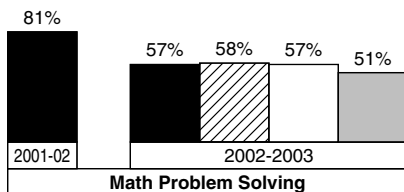
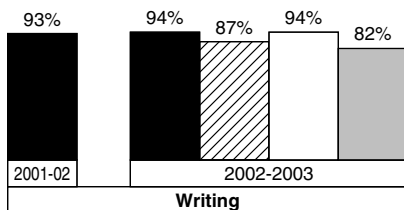
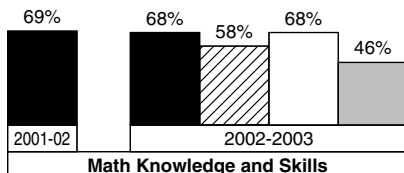
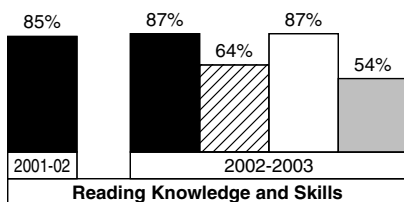
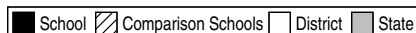
Academic Achievement

Student Performance Rating: **STRONG**

Percentage of Students Meeting Standards

The graphs below show the percentage of students in your school that met or exceeded the state standards on Oregon Statewide Assessments during the last two school years. District, state, and comparison school averages are displayed. Comparison schools are Oregon schools with similar demographics.

Grade 10



Improvement

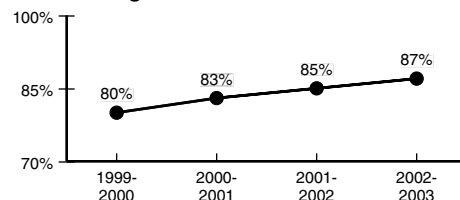
Assessments, Attendance, Dropout

Improvement Rating: **STAYED ABOUT THE SAME**

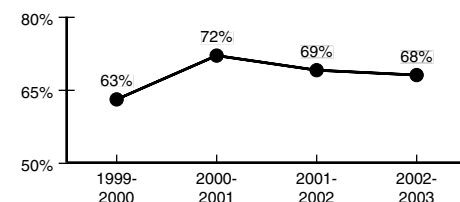
Four-Year Improvement

The graphs below show change during the past four years in the percentage of students meeting standards on Reading and Math Knowledge and Skills Statewide Assessments and in attendance and dropout rates. Improvement ratings are described by one of the following: Improved, Stayed About the Same, or Declined.

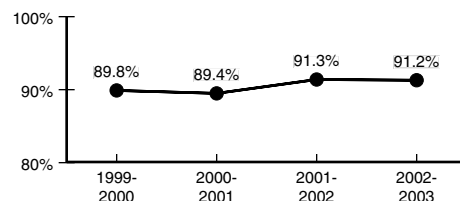
Grade 10 Reading



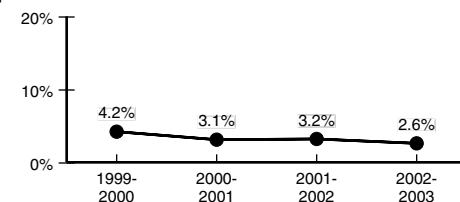
Grade 10 Mathematics



Attendance



Dropout Rate



SCHOOL RATINGS AND SUPPORTING DATA



Attendance/Dropout Rates

Student Behavior Rating: **STRONG**

Attendance	School	District	State	Dropout	Number in School	School	District	State
2001-2002	91.3%	93.3%	91.5%	2001-2002	39	3.2%	3.2%	4.9%
2002-2003	91.2%	92.9%	91.8%	2002-2003	31	2.6%	2.6%	4.4%

Statewide Assessments

The table below shows the percentage of students in your school that exceeded, met, or did not meet state standards and participated in 2002-2003 Oregon Statewide Assessments. For more information, see www.ode.state.or.us/asmr/results

STUDENT GROUP	STUDENT ACHIEVEMENT						STUDENT PARTICIPATION	
	ENGLISH/ LANGUAGE ARTS			MATHEMATICS			ENGLISH/ LANGUAGE ARTS	MATHEMATICS
	EXCEEDED %	MET %	NOT MET %	EXCEEDED %	MET %	NOT MET %	%	%
White	28.2	52.1	19.7	28.3	36.1	35.7	96.7	94.1
African American/Black	0.0	50.0	50.0	< 5.0	< 5.0	> 95.0	100.0	66.7
Hispanic	20.0	32.0	48.0	11.1	25.9	63.0	89.3	96.4
Asian/Pacific Islander	12.5	37.5	50.0	42.9	14.3	42.9	100.0	87.5
American Indian/Alaskan Native	0.0	83.3	16.7	14.3	57.1	28.6	100.0	100.0
Multi-Racial/Multi-Ethnic	*	*	*	*	*	*	100.0	100.0
Male	26.5	51.6	21.9	30.6	37.7	31.7	97.2	93.1
Female	27.2	51.5	21.3	23.3	32.6	44.2	95.1	94.5
Students with Disabilities	7.3	22.0	70.7	13.9	13.9	72.2	100.0	94.7
Migrant	*	*	*	*	*	*	100.0	100.0
Limited English Proficient	0.0	16.7	83.3	0.0	6.3	93.8	80.0	94.1
Economically Disadvantaged	15.2	45.7	39.1	12.5	31.3	56.3	100.0	100.0
All Students	26.9	51.6	21.6	27.0	35.2	37.8	96.1	93.8

* Not displayed to protect student confidentiality.

--- No data available

Department of Education Notes