

ACCOUNTABILITY INFORMATION REQUIRED BY THE FEDERAL NO CHILD LEFT BEHIND ACT

The information below is used to determine the Adequate Yearly Progress designation for your school. A school is designated as *Not Meeting AYP* if any indicator is determined to be *Not Met*. The Student Achievement and Student Participation ratings are based on 2001-2002 and 2002-2003 Oregon Statewide Assessments for the students in your school identified as enrolled for a full academic year. The statewide goal for the minimum percentage of students expected to meet or exceed standards is 40.0% in English/Language Arts and 39.0% in Mathematics. Student Participation is expected to be 95.0% or greater. The statewide goal for the minimum graduation rate is 68.1%. The statewide goal for the minimum attendance rate is 92.0%. For more information, please view documents at www.ode.state.or.us/nclb/ayp/index.asp

STUDENT GROUP	STUDENT ACHIEVEMENT		STUDENT PARTICIPATION		ATTENDANCE
	ENGLISH/LANGUAGE ARTS	MATHEMATICS	ENGLISH/LANGUAGE ARTS	MATHEMATICS	
Race/Ethnicity					
White	MET	MET	MET	MET	---
African American/Black	NA	NA	NA	NA	---
Hispanic	NA	NA	NA	NA	---
Asian/Pacific Islander	NA	NA	NA	NA	---
Am. Indian/Alaskan Native	NA	NA	NA	NA	---
Multi-Racial/Multi-Ethnic	NA	NA	NA	NA	---
Special Education	NA	NA	NA	NA	---
Limited English Proficient	NA	NA	NA	NA	---
Economically Disadvantaged	NA	MET	NA	MET	---
All Students	MET	MET	MET	MET	MET

NA Too few test scores or students to determine a rating.

--- No data available

Department of Education Notes

LOCAL INFORMATION PROVIDED BY YOUR SCHOOL OR DISTRICT

2002-2003 School Report Card

HELMAN
ELEMENTARY SCHOOL



Dear Parents and Community Members,

January 29, 2004

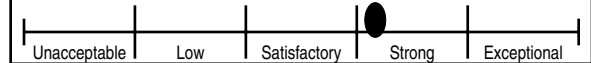
The Oregon Department of Education is proud to issue the fifth annual school report card. As Oregon schools and districts continue to face many challenges, educators remain committed to providing the highest quality education for Oregon students. This year you will find two ratings displayed on this report card: an Oregon rating and a federal rating required by the No Child Left Behind Act. The report card is not meant to tell you everything about your school, but it offers a starting point for discussions about where improvement might be needed and for celebrating successes in education for Oregon's children.

Susan Castillo
Susan Castillo, State Superintendent of Public Instruction

Federal Adequate Yearly Progress Rating: MET

DID NOT MEET MET
See rating details on back page

Oregon Report Card Overall Rating: STRONG



SCHOOL AT A GLANCE



Testing Participation

School Characteristics Rating: **EXCEPTIONAL**

Grades 3 and 5

	School	State
Participation in 2002-2003 Statewide Assessment	100.0%	99.8%

School Size

	School
Number of Students	210

English Language Learners

	School
Percentage of Students in ESL Programs	2.9%

Elementary Class Size

	Number of Classes in School	School	State
Fewer than 20 Students	1	12.5%	16.6%
20-25 Students	2	25.0%	48.5%
26-30 Students	4	50.0%	30.1%
More Than 30 Students	1	12.5%	4.8%

Expulsions

	School	State
Number of Expulsions Due to Weapons	0	380

Staffing

	School
Administrators (FTE)	1.0
Teachers (FTE)	13.4
• Average Years of Experience	16.0
• With a Master's Degree or Higher	64.3%
• With Emergency or Provisional Credential as of November 25, 2003	0.0%
• Classes Taught by Teachers Who Meet Federal Definition of Highly Qualified Teacher	100.0%
Instructional Assistants (FTE)	5.8
Other Staff (FTE)	3.8

Department of Education Notes

SCHOOL RATINGS AND SUPPORTING DATA



Academic Achievement

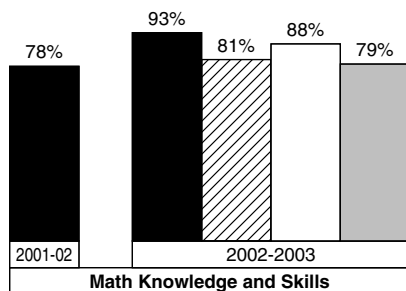
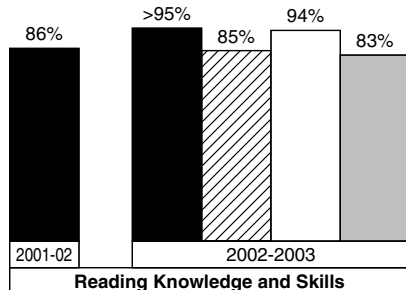
Student Performance Rating: **STRONG**

Percentage of Students Meeting Standards

The graphs below show the percentage of students in your school that met or exceeded the state standards on Oregon Statewide Assessments during the last two school years. District, state, and comparison school averages are displayed. Comparison schools are Oregon schools with similar demographics.

Grades 3 and 5

School
 Comparison Schools
 District
 State



Attendance

Student Behavior Rating: **STRONG**

Attendance	School	District	State
2001-2002	93.9%	93.3%	93.9%
2002-2003	94.6%	92.9%	93.9%



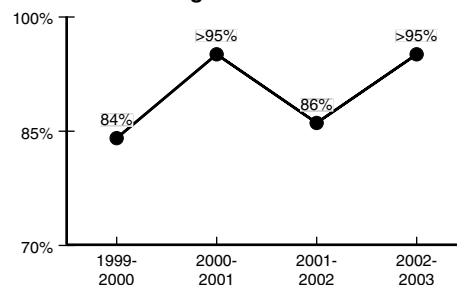
Improvement Assessments and Attendance

Improvement Rating: **STAYED ABOUT THE SAME**

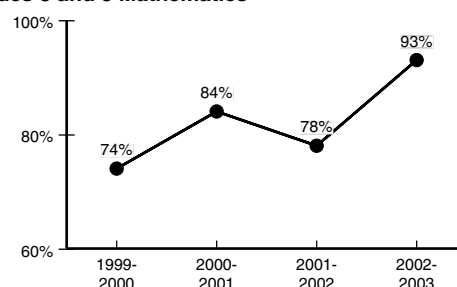
Four-Year Improvement

The graphs below show change during the past four years in the percentage of students meeting standards on Reading and Math Knowledge and Skills Statewide Assessments and in attendance. Improvement ratings are described by one of the following: Improved, Stayed About the Same, or Declined.

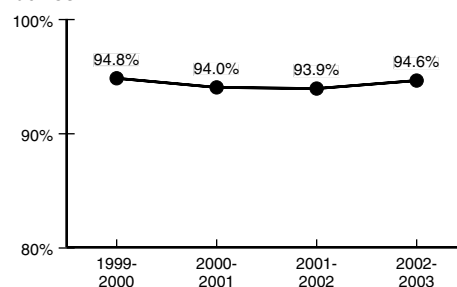
Grades 3 and 5 Reading



Grades 3 and 5 Mathematics



Attendance



SCHOOL RATINGS AND SUPPORTING DATA

Statewide Assessments

The table below shows the percentage of students in your school that exceeded, met, or did not meet state standards and participated in 2002-2003 Oregon Statewide Assessments. For more information, see www.ode.state.or.us/asmt/results

STUDENT GROUP	STUDENT ACHIEVEMENT						STUDENT PARTICIPATION	
	READING			MATHEMATICS			READING	MATHEMATICS
Race/Ethnicity	EXCEEDED %	MET %	NOT MET %	EXCEEDED %	MET %	NOT MET %	%	%
White	57.1	39.0	3.9	50.6	45.5	3.9	100.0	100.0
African American/Black	*	*	*	*	*	*	100.0	100.0
Hispanic	50.0	16.7	33.3	33.3	16.7	50.0	100.0	100.0
Asian/Pacific Islander	*	*	*	*	*	*	100.0	100.0
American Indian/Alaskan Native	*	*	*	*	*	*	100.0	100.0
Multi-Racial/Multi-Ethnic	---	---	---	---	---	---	---	---
Male	57.1	35.7	7.1	57.1	38.1	4.8	100.0	100.0
Female	58.7	37.0	4.3	45.7	45.7	8.7	100.0	100.0
Students with Disabilities	33.3	33.3	33.3	8.3	58.3	33.3	100.0	100.0
Migrant	*	*	*	*	*	*	100.0	100.0
Limited English Proficient	*	*	*	*	*	*	100.0	100.0
Economically Disadvantaged	38.5	46.2	15.4	44.4	38.9	16.7	100.0	100.0
All Students	58.0	36.4	5.7	51.1	42.0	6.8	100.0	100.0

* Not displayed to protect student confidentiality.

--- No data available

Department of Education Notes